



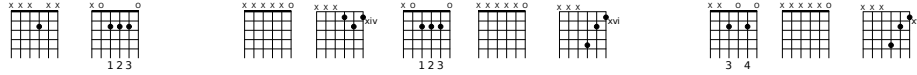
Angel Voices, Ever Singing

Angel Voices

Francis Pott 1832-1909
8.5.8.5.8.4.3

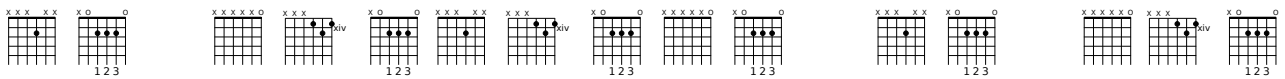
Arthur S. Sullivan 1842-1900

A A E A^{6/sus4} A E D^{#4/sus#4/sus2} C^{#0} E D^{#4/sus#4/sus2}



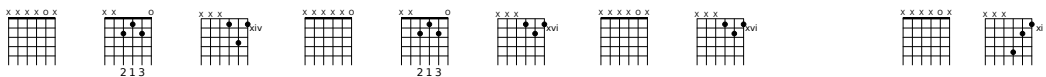
1. An - gel voic - es, e - - ver sin - - - ging
 2. Thou who art be - yond the far - - thest
 3. Yea, we know that Thou re - joic - - est
 4. Here, great God, to - day we of - - fer

A A E A^{6/sus4} A A A^{6/sus4} A E A A A E A^{6/sus4} A



3 Round Thy throne of light, An - gel harps for
 Mor - tal eye can scan, Can it be that
 O'er each work of Thine; Thou didst ears and
 Of Thine own to Thee; And for Thine ac -

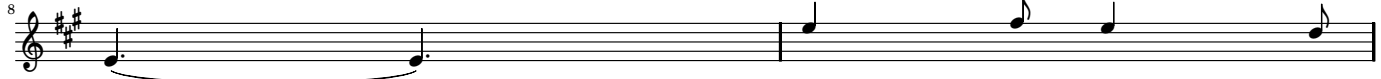
B C^{#m} A^{6/sus#4} E C^{#m} B^{6/sus4} B B^{6/sus4} B A^{#4/sus#4/sus2}



6 e - - ver ring - - ing Rest not day nor
 thou re - gard - - est Songs of sin - - ful
 hands and voic - - es For Thy praise de -
 cept - - ance prof - - fer, All un - wor - - thi -

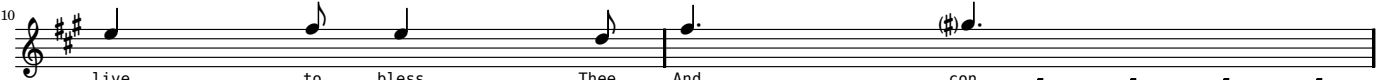
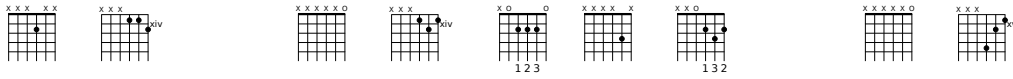


E B^{6/sus4} A E F^{#7/b6/add9} G^{#b6/b5/add8} A A⁷ E A^{6/sus4} A



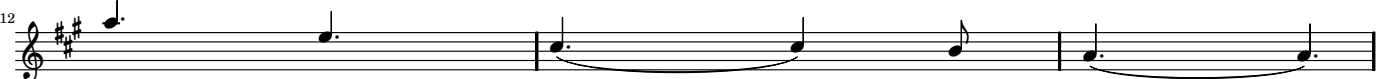
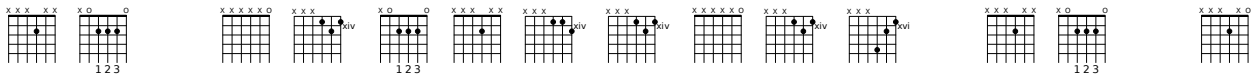
night;
man?
sign;
ly,
Thou - - sands on - - ly
Can we feel that
Crafts - - man's art and
Hearts and minds, and

A A⁷ E A^{6/sus4} A D D E D^{#4/sus#4/sus2}



live to bless Thee, And con - - -
Thou art near us And wilt
mu - sic's mea - sure For Thy
hands and voic - es, In our

A A E A^{6/sus4} A A A⁷ A^{6/sus4} E A^{6/sus4} D^{#4/sus#4/sus2} A A A



fess Thee Lord of might.
hear us? Yea, we can.
plea - - sure All com - bine.
choic - - est Mel - - - o - dy.