



Angel Voices, Ever Singing

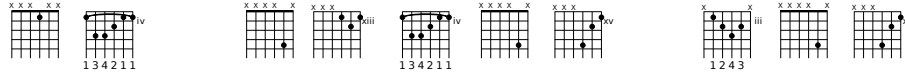
Angel Voices

Francis Pott 1832-1909

Arthur S. Sullivan 1842-1900

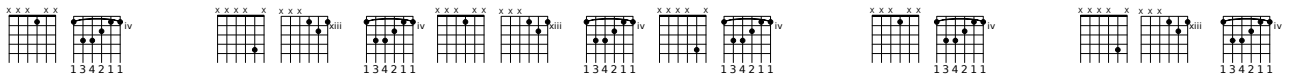
8.5.8.5.8.4.3

A \flat A \flat E \flat A \flat ^{6/sus4} A \flat E \flat D \flat ^{#4/sus#4/sus2} C^o E \flat D \flat ^{#4/sus#4/sus2}



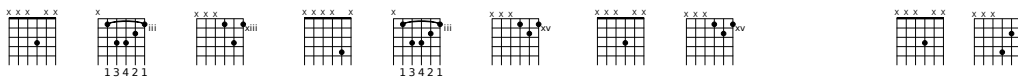
1. An - gel voic - es, e - - ver sin - - - ging
 2. Thou who art be - yond the far - - thest
 3. Yea, we know that Thou re - joic - - est
 4. Here, great God, to - day we of - - fer

A \flat A \flat E \flat A \flat ^{6/sus4} A \flat A \flat A \flat ^{6/sus4} A \flat E \flat A \flat A \flat A \flat E \flat A \flat ^{6/sus4} A \flat



3 Round Thy throne of light, An - gel harps for
 Mor - tal eye can scan, Can it be that
 O'er each work of Thine; Thou didst ears and
 Of Thine own to Thee; And for Thine ac -

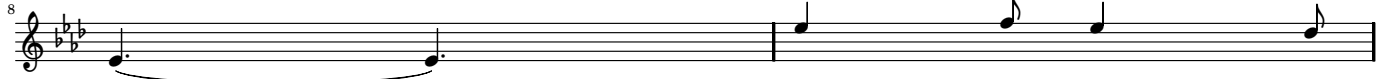
B \flat Cm A \flat ^{6/sus#4} E \flat Cm B \flat ^{6/sus4} B \flat B \flat ^{6/sus4} B \flat A \flat ^{#4/sus#4/sus2}



6 e - - ver ring - - ing Rest not day nor
 thou re - gard - - est Songs of sin - - ful
 hands and voic - - es For Thy praise de -
 cept - - ance prof - - fer, All un - wor - - thi -



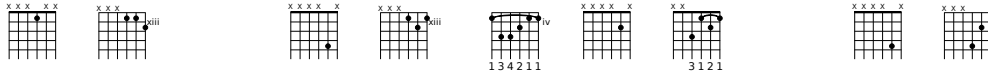
E \flat B \flat ^{6/sus4} A \flat E \flat F^{7/ \flat 6/add9} G ^{\flat 6/ \flat 5/add8} A \flat A \flat ⁷ E \flat A \flat ^{6/sus4} A \flat



night;
man?
sign;
ly,

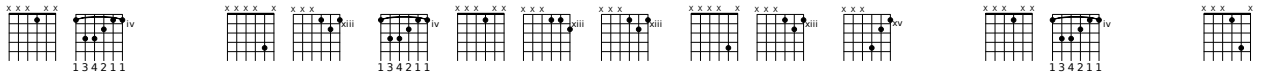
Thou - - sands on - - ly
Can we feel that
Crafts - - man's art and
Hearts and minds, and

A \flat A \flat ⁷ E \flat A \flat ^{6/sus4} A \flat D \flat D \flat E \flat D \flat ^{#4/sus#4/sus2}



live to bless Thee, And con
Thou art near us And wilt
mu - - sic's mea - - sure For Thy
hands and voic - - es, In our

A \flat A \flat E \flat A \flat ^{6/sus4} A \flat A \flat A \flat ⁷ A \flat ^{6/sus4} E \flat A \flat ^{6/sus4} D \flat ^{#4/sus#4/sus2} A \flat A \flat A \flat



fess Thee Lord of might.
hear us? Yea, we can.
plea - - sure All com - bine.
choic - - est Mel - - o - - dy.