



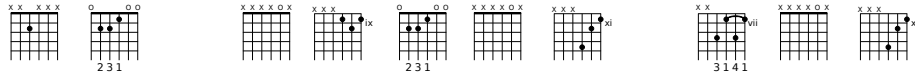
Angel Voices, Ever Singing

Angel Voices

Francis Pott 1832-1909
8.5.8.5.8.4.3

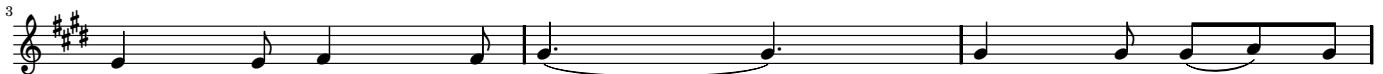
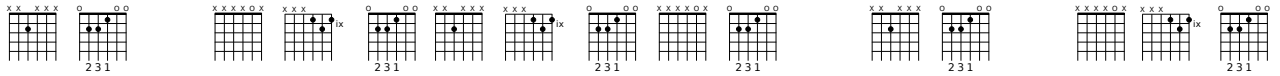
Arthur S. Sullivan 1842-1900

E E B E^{6/sus4} E B A^{#4/sus#4/sus2} G^{#0} B A^{#4/sus#4/sus2}



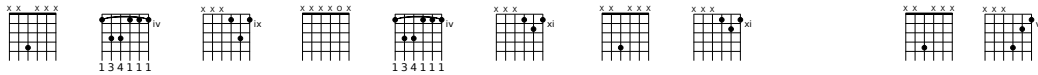
1. An - gel voic - es, e - - ver sin - - ging
2. Thou who art be - yond the far - - thest
3. Yea, we know that Thou re - joic - - est
4. Here, great God, to - day we of - - fer

E E B E^{6/sus4} E E E^{6/sus4} E B E E E B E^{6/sus4} E



Round Thy throne of light, An - gel harps for
Mor - tal eye can scan, Can it be that
O'er each work of Thine; Thou didst ears and
Of Thine own to Thee; And for Thine ac -

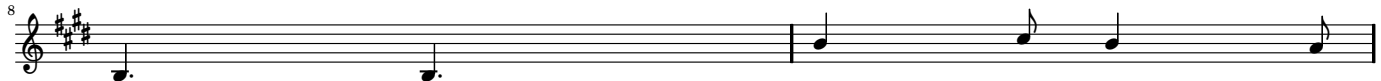
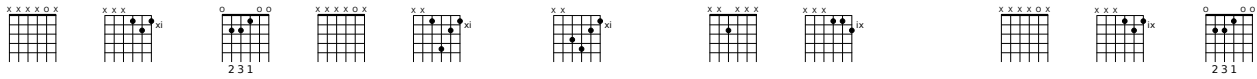
F# G#m E^{6/sus#4} B G#m F#^{6/sus4} F# F#^{6/sus4} F# E^{#4/sus#4/sus2}



e - - ver ring - - ing Rest not day nor
thou re - gard - - est Songs of sin - - ful
hands and voic - - es For Thy praise de -
cept - - ance prof - - fer, All un - wor - - thi -

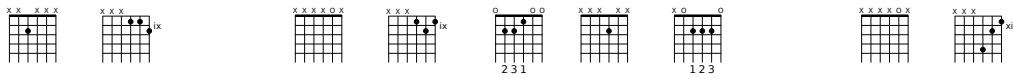


B F#^{6/sus4} E B C#^{7/b6/add9} D#^{b6/b5/add8} E E⁷ B E^{6/sus4} E



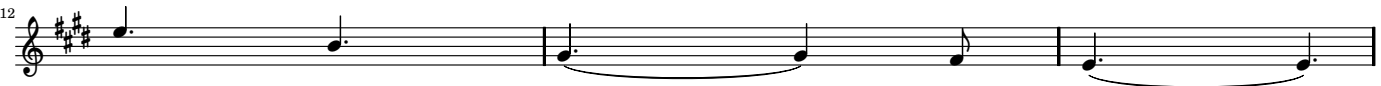
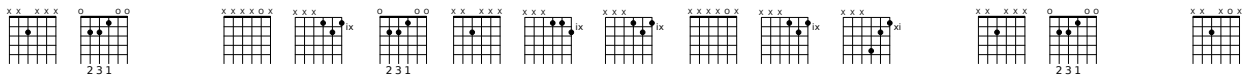
night;
man?
sign;
ly,
Thou - - sands on - - ly
Can we feel that
Crafts - - man's art and
Hearts and minds, and

E E⁷ B E^{6/sus4} E A A B A^{#4/sus#4/sus2}



live to bless Thee, And con
Thou art near us, And wilt
mu - - sic's mea - - sure For Thy
hands and voic - - es, In our

E E B E^{6/sus4} E E E⁷ E^{6/sus4} B E^{6/sus4} A^{#4/sus#4/sus2} E E E



fess Thee Lord of
hear us? Yea, we might.
plea - - sure All com - - bine.
choic - - est Mel - - o - - dy.